

Brushless Motor with an integrated Controller

BLA Series

AC Power Supply Input
90 mm 50 W

This is the AC input brushless motor integrated with a driver, motor and digital setting device. Speed control can be set by digital setting display on the back.



Contributes to Space Saving and Simple Wiring

As there is no need of wiring between the motor and driver, nor a setting device, the number of process can be reduced. In addition, the space to install a driver is not required, thus the series contributes to the space saving of customers' equipments.

Digital Setting

Anyone can operate precise and repeatable speed setting. The combination type displays the speed of gearhead output shaft.

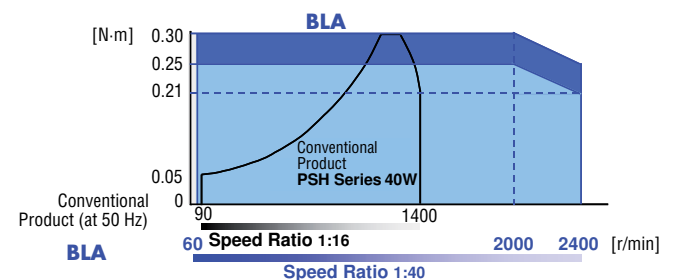


Excellent Speed Stability

The brushless motor's speed is stable from low speed through high speed. Speed regulation is $\pm 0.2\%$. Operating at a constant speed is possible despite the load or power supply voltage conditions.

Wide Range of Speed Setting (1:40)

The brushless motor generates a constant torque, and a wide range of speed control is possible with this. In addition, low speed operation is now available by adopting a new sensor.



Various Protection Functions and Warning Function

Equipped with various protection functions including overload protection function and overheat protection function of the main circuit. In addition, warning is output prior to the alarm output.

Motor Specification RoHS



Product Name	Combination Type, Parallel Shaft Gearhead Round Shaft Type	BLA550AB-□	BLA550CB-□
		BLA550AB-A	BLA550CB-A
Rated Output Power (Continuous)		50 W	
Rated Voltage		Single-Phase 100-120 VAC	Single-Phase 200-240 VAC
Rated Torque		0.25 N·m	
Starting Torque		0.3 N·m	
Rated Speed		2000 r/min	
Speed Control Range		60~2400 r/min	
Speed Regulation	With Load	$\pm 0.2\%$ max.	
	With Voltage	$\pm 0.2\%$ max.	
	With Temperature	$\pm 0.2\%$ max.	

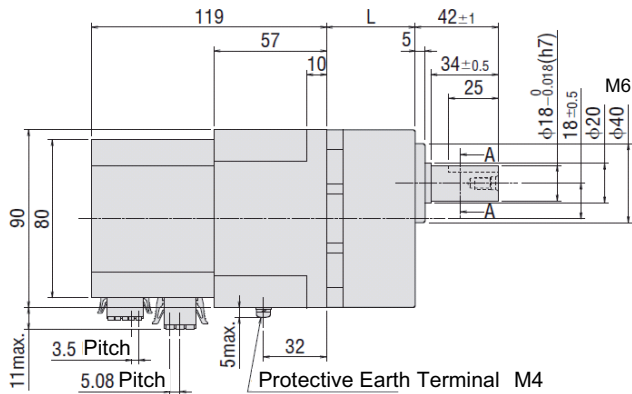
- Enter the gear ratio in the box (□) within the model name.
- The values for each specification apply to the motor only.

Gear Ratio		5	9	15	30	50	100	180	
Speed Control Range [r/min]		12~180	6.7~267	4~160	2~80	1.2~48	0.6~24	0.3~13	
Permissible Torque [N·m]	Motor Shaft Speed								
	At 60~2000 r/min	1.1	2	3.4	6.5	10.8	21.5	30	
	At 2400 r/min	0.95	1.7	2.8	5.4	9	18.1	30	
Permissible Inertia Moment [J:10-4kg·m ²]		10	3.24	90	360	1.000	1.000	1.000	
Permissible Radial Load [N]	10 mm from Installation Surface of Gearhead	400		450		500			
	20 mm from Installation Surface of Gearhead	500		600		700			
Permissible Axial Load [N]									150

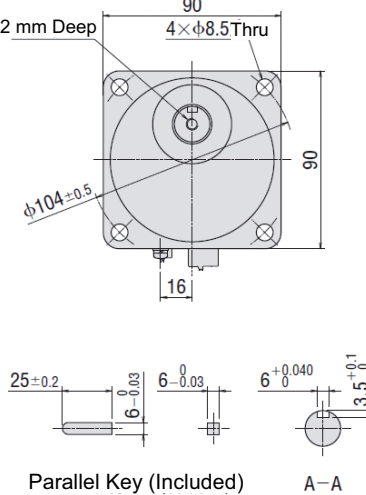
Dimensions (Unit = mm)

◇ Combination Type

Mass: 3.2 kg



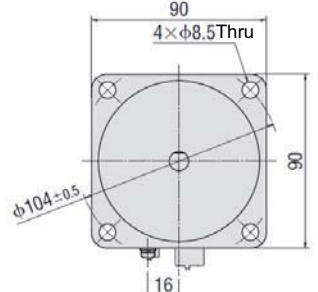
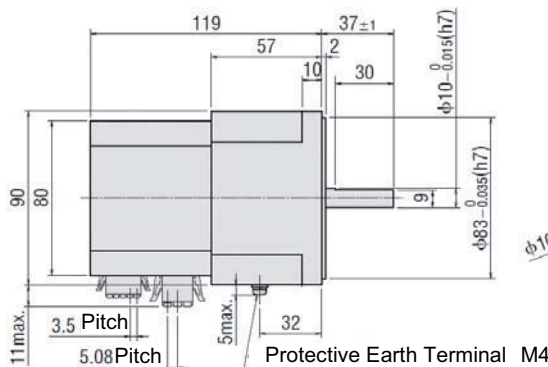
Gear Ratio	L
5, 9, 15	45
30, 50, 100	58
180	64



- Accessory (Included)
 - CN1 Connector : FKC2,5/3-ST-5,08-RF (Phoenix Contact)
 - CN2 Connector : FMC1,5/5-ST-3,5-RF (Phoenix Contact)

◇ Round Shaft Type

Mass: 1.7 kg



- Accessory (Included)
 - CN1 Connector : FKC2,5/3-ST-5,08-RF (Phoenix Contact)
 - CN2 Connector : FMC1,5/5-ST-3,5-RF (Phoenix Contact)

Model

Output Power	Power Supply Voltage	Product Name	Gear Ratio	
50 W	Single-Phase 100-120 VAC	BLA550AB-□	5, 9, 15	
			30	
			50, 100, 180	
			BLA550AB-A	-
	Single-Phase 200-240 VAC	BLA550CB-□	5, 9, 15	
			30	
50, 100, 180				
		BLA550CB-A	-	

- Enter the gear in the box (□) within the model name.
- Please be noted that the performance and specification in this document are subject to change without prior notice for improvement.

Dedicated Cable for Input and Output

Product Name	Length (m)
CC05D1B-1	1
CC05D2B-1	2



Specifications are subject to change without notice. Published in November 2012.

ORIENTAL MOTOR (EUROPA) GmbH

www.orientalmotor.de

European Headquarters and Düsseldorf Office
 Schiessstraße 74
 40549 Düsseldorf, Germany
 Tel: 0211-5206700 Fax: 0211-52067099

Customer Center (Support in German & English)

00800-22 55 66 22*
 info@orientalmotor.de

* Free Call Europe

These products are manufactured at plants certified with the international standards ISO 9001 (for quality assurance) and ISO 14001 (for systems of environmental management).